

Your full name (as on appointment slip). Please use BLOCK CAPITALS.

Your signature

Registration number

Centre

Instructions to Candidates

1. The time allowed for answering this paper is **two (2) hours**.
2. Fill in your name and the registration number printed on your appointment slip in the appropriate spaces on this paper, and on any other sheets that you use.
3. **Do not open this paper until you are told to do so.**
4. This paper contains **six (6) sections** and you should answer all of them.
5. Read each question carefully before answering it. Your answers must be written legibly in the spaces provided.
6. You are reminded that you are bound by the regulations for written examinations displayed at the examination centre and listed on page 4 of the current edition of the written examinations syllabus. In particular, you are reminded that you are not allowed to bring books, music or papers into the examination room. Bags must be left at the back of the room under the supervision of the invigilator.
7. If you leave the examination room you will not be allowed to return.

Examiner's use only:

1	
2	
3	
4	
5	
6	
Total	

Section 1 (20 marks)

Boxes for
examiner's
use only

Put a tick (✓) in the box next to the correct answer.

Example

Name this note:



A D C

This shows that you think C is the correct answer.

1.1 Name this note:



G B E

1.2 Name this note:



F natural F sharp D sharp

1.3 Name the notes to find the hidden word:

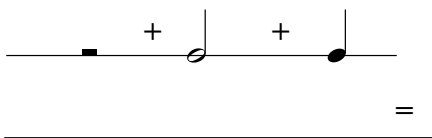


BAD DAD BAG

1.4 How many crotchet beats are there in a semibreve?

2 3 4

1.5 Add the total number of crotchet beats in these note values and rests.



5 4 7

Put a tick (✓) in the box next to the correct answer.

Boxes for
examiner's
use only

1.6 Which rest matches the length of this note value?



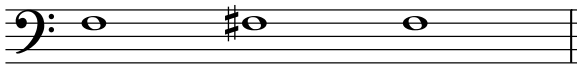
-
-
- ♪

1.7 Which is the correct time signature?



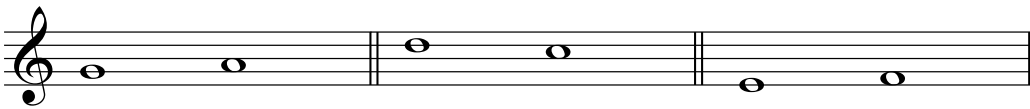
- C**
- $\frac{2}{4}$
- $\frac{3}{4}$

1.8 To return the last note to the pitch of the first note, which accidental would you put just before it?



- ♯
- ♭
- ♯

1.9 Which pair of notes has a distance of a semitone between them?

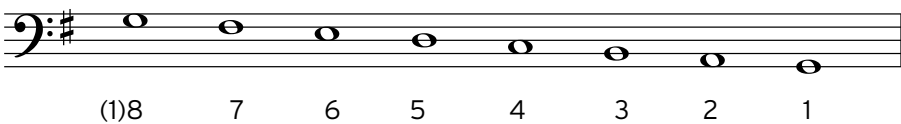


- G and A
- D and C
- E and F

1.10 Which note is doh in the key of F major?

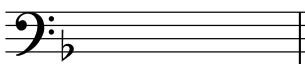
- C
- F
- G

1.11 Here is the scale of G major. Where are the semitones?



- Between the 5th & 6th and 7th & 8th degrees
- Between the 2nd & 3rd and 7th & 8th degrees
- Between the 3rd & 4th and 7th & 8th degrees

1.12 Which major key has the following key signature?

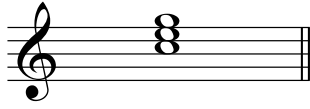


- G major
- C major
- F major

Put a tick (✓) in the box next to the correct answer.

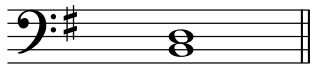
Boxes for
examiner's
use only

1.13 Which chord symbol fits above this tonic triad?



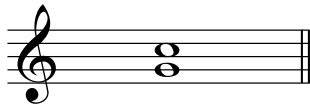
C F G

1.14 Which note needs to be added to make a tonic triad in the key of G major?



G D B

1.15 Name this interval:



5th 4th 3rd

1.16 Name this interval:



2nd 3rd Unison

1.17 If you write a piece in the key of C major, from which scale will you take most of the notes?

F major G major C major

1.18 Which notes would you find in the tonic triad in the key of F major?

FAE FGA FAC

1.19 What does *fortissimo* mean?

Very loud
Loud
Getting gradually louder

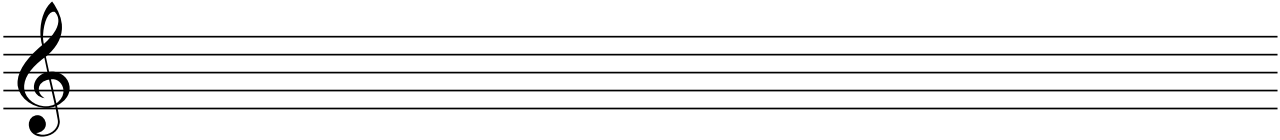
1.20 A tempo mark tells a player:

how loudly or softly to play
to play smoothly
what speed to play the music

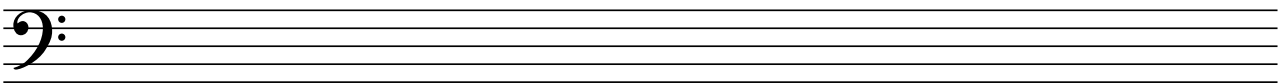
Section 2 (20 marks)

Write the following, using key signatures.

- 2.1 A one-octave F major scale in semibreves going up. Mark the semitones with a bracket (/ \ or \ /) and an **S** for semitone.



- 2.2 A one-octave arpeggio of C major in semibreves going up then down.



Section 3 (15 marks)

- 3.1 Circle five different mistakes in the following music, then write it out correctly.

Allegretto
p

Musical notation for question 3.1. It shows a treble clef staff with a key signature of one sharp (F#) and a 3/4 time signature. The melody consists of several notes, including some with incorrect stems and a final note with an incorrect dynamic marking. Below the staff are two empty lines for writing the corrected version.

Section 4 (15 marks)

- 4.1 Answer the following rhythm.

A single common time (C) staff showing a sequence of rhythmic figures: a quarter note, two eighth notes, a dotted quarter note, a quarter rest, a half note, and a whole note. Below the staff are two empty lines for writing the answer.

Section 5 (10 marks)

- 5.1 Here is an ostinato. Write two more repeats of the pattern.

Musical notation for question 5.1. It shows a bass clef staff with a key signature of two flats (Bb, Eb) and a 2/4 time signature. The ostinato pattern consists of two measures of eighth notes: G2-A2-Bb2-C3 and D3-E3-F3-G3. Below the staff are two empty lines for writing two more repeats of the pattern.

Section 6 (20 marks)

Boxes for
examiner's
use only

Look at the following piece and answer the questions below.

1 **Allegro**

5

6.1 In which major key is this piece? _____

6.2 Write a Roman numeral below the last note of this piece to show that the tonic triad should accompany it.

6.3 How many crotchet beats are there in each bar? _____

6.4 Put a bracket (┌─┐) above the place where there is a one-octave scale in the key of the piece.

6.5 Is this scale going up or down? _____

6.6 What does the curved line over the first two crotchets in bar 2 mean? _____

6.7 Name the interval between the two notes marked with asterisks (*) in bar 1. _____

6.8 At what dynamic should a musician start to play this piece? _____

6.9 Write the lowest and highest notes in this piece as minims.

6.10 What does **Allegro** mean?

